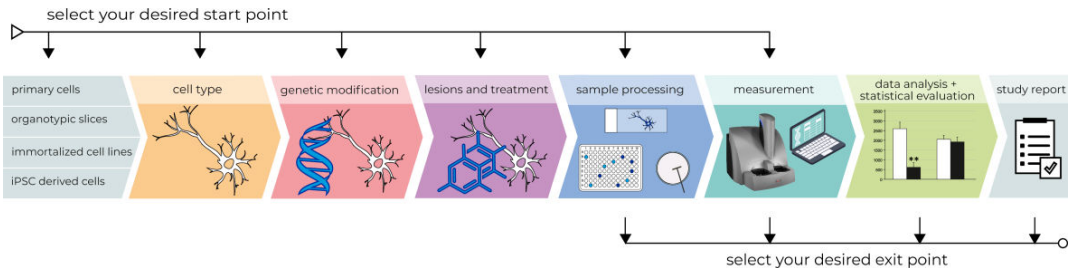


QPS Cell Culture Workflow

Custom-built research services for your specific needs

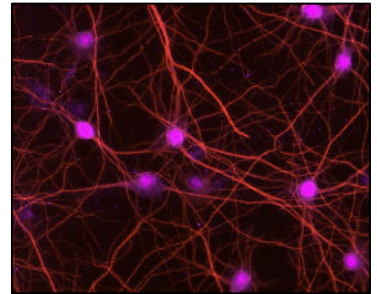


Cell type

- Neuron, microglia, astrocytes
- Primary cells, brain slices
- cell lines, iPSC derived cells

Genetic modification

- Stably transfected cell lines
- Transient transfection or virus transduction
- Primary cells from transgenic mice or rats



Lesion and treatment

- Induction of disease related phenotypes by various lesions (MPP+, 6-OHDA, L-Glutamate...)
- Treatment of cells with developmental compounds and reference items

Sample processing and measurement

- Fixation and staining for Immunocytochemistry and image based analysis
- Harvesting of cells for protein or RNA analysis
- Cell-based assays (viability, toxicity, mitochondrial activity...)